

# JAZZ PLATE: LESSON SIX

(Bb)

MAJOR 7TH CHORDS  
 WARM-UP: SYMMETRICAL SCALES  
 APPROACH AND SURROUND NOTES  
 BUILDING PENTATONIC PATTERNS  
 IMPROVISATION: RHYTHM CHANGES

C C<sup>b</sup> Cm<sup>7</sup> C<sup>7</sup> Cmaj<sup>7</sup> MAJOR 7TH  
MAJOR 3RD

WARM-UP (1:45)

G MAJOR SCALE

C MAJOR SCALE

Ex 1 (3:00)

Cmaj<sup>7</sup> (LISTEN) (YOU REPEAT PREVIOUS BAR) Dbmaj<sup>7</sup> Dmaj<sup>7</sup>

Ebmaj<sup>7</sup> Emaj<sup>7</sup> Fmaj<sup>7</sup>

Gbmaj<sup>7</sup> Gmaj<sup>7</sup> Abmaj<sup>7</sup>

Amaj<sup>7</sup> Bbmaj<sup>7</sup> Bmaj<sup>7</sup>

Ex 2 (5:05)

Cmaj<sup>7</sup> Dbmaj<sup>7</sup> Dmaj<sup>7</sup> Ebmaj<sup>7</sup> Emaj<sup>7</sup> Fmaj<sup>7</sup>

Gbmaj<sup>7</sup> Gmaj<sup>7</sup> Abmaj<sup>7</sup> Amaj<sup>7</sup> Bbmaj<sup>7</sup> Bmaj<sup>7</sup>

Ex 3 (6:10)

Cmaj<sup>7</sup> Fmaj<sup>7</sup> Bbmaj<sup>7</sup> Ebmaj<sup>7</sup> Abmaj<sup>7</sup> Dbmaj<sup>7</sup>

Gbmaj<sup>7</sup> Bbmaj<sup>7</sup> Emaj<sup>7</sup> Amaj<sup>7</sup> Dmaj<sup>7</sup> Gmaj<sup>7</sup>

*C*maj7

MAJOR SCALE

MAJOR PENTATONIC SCALE

MINOR PENTATONIC SCALE

NON HARMONIC TONES

*C*maj7

PASSING TONES

AUXILIARY TONES

APPROACH TONES

SURROUND TONES

PT PT

UPPER LOWER

AUX AUX

FROM ABOVE

FROM BELOW

ROOT 3 5

SURROUND TONES

APPROACH TONE

SURROUND TONES

\*PENTATONIC PATTERNS (PLEASE REFER TO THE PENTATONIC CHART PDF FOR YOUR INSTRUMENT AT MYMUSICP8.COM/JAZZPLATE)

PATTERN 1 (SCALE)

*C*

*G*

*G*

*G* PENT OPT 1

*G* PENT OPT 2

PATTERN 2 (SCALE IN 3RDS)

*C*

*G*

*G* PENT OPT 1

*G* PENT OPT 2

PATTERN 3

1 2 3 5

6 1 2 3

DESCENDING

1 6 5 3

2 1 6

(ASCENDED ONE EXTRA BAR IN RECORDING)

PATTERN 3 (CHROMATIC SUBSTITUTION)

C C# D Eb

1 2 3 5

PATTERN 3 (CHROMATIC SUBSTITUTION OF BAR 1)

C C# D Eb

1 1 1 1

PATTERN 3 (TRITONE SUBSTITUTION)

C F#

1

PATTERN 3 (SHIFTING FROM SHARED TONES)

C Bb Ab

1 2/3 5/6

Gb Eb C

1/2 3/5 6/1

4 IMPROVISATION 1 (17:05)

PLAY 4x

DEMO (16:15)

Dm<sup>7</sup>



G<sup>7</sup>



Cmaj<sup>7</sup>



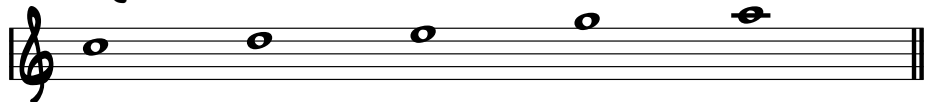
IMPROVISATION 2 (21:10)

RHYTHM CHANGES

PLAY 2x

DEMO (19:50)

C (MAJOR PENTATONIC)



Cmaj<sup>7</sup>

A<sup>7</sup>

Dm<sup>7</sup>

G<sup>7</sup>

Em<sup>7</sup>

A<sup>7</sup>

Dm<sup>7</sup>

G<sup>7</sup>



Gm<sup>7</sup>

C<sup>7</sup>

F<sup>7</sup>

Bb<sup>7</sup>

1.

Em<sup>7</sup>

A<sup>7</sup>

Dm<sup>7</sup>

G<sup>7</sup>

2.

Dm<sup>7</sup>

G<sup>7</sup>

C<sup>6</sup>



BRIDGE

E<sup>7</sup>



A<sup>7</sup>

D<sup>7</sup>



G<sup>7</sup>

Cmaj<sup>7</sup>

A<sup>7</sup>

Dm<sup>7</sup>

G<sup>7</sup>

Em<sup>7</sup>

A<sup>7</sup>

Dm<sup>7</sup>

G<sup>7</sup>



Gm<sup>7</sup>

C<sup>7</sup>

F<sup>7</sup>

Bb<sup>7</sup>

Dm<sup>7</sup>

G<sup>7</sup>

C<sup>6</sup>

