

JAZZ PLATE: LESSON SIX

(C)

MAJOR 7TH CHORDS
WARM-UP: SYMMETRICAL SCALES
APPROACH AND SURROUND NOTES
BUILDING PENTATONIC PATTERNS
IMPROVISATION: RHYTHM CHANGES

8b 8b^b 8b^m7 8b7 8b^maj7 MAJOR 7TH
MAJOR 3RD

WARM-UP(1:45)

F MAJOR SCALE

B FLAT MAJOR SCALE

Ex 1 (3:00)

(LISTEN) (YOU REPEAT PREVIOUS BAR)

8b^maj7 8maj7 Cmaj7

D^bmaj7 Dmaj7 E^bmaj7

E^maj7 Fmaj7 G^bmaj7

Gmaj7 A^bmaj7 Amaj7

Ex 2 (5:05)

8b^maj7 Cmaj7 Cmaj7 D^bmaj7 Dmaj7 E^bmaj7

E^bmaj7 Fmaj7 G^bmaj7 Gmaj7 A^bmaj7 Amaj7

Ex 3 (6:10)

8b^maj7 E^bmaj7 A^bmaj7 D^bmaj7 G^bmaj7 8maj7

E^maj7 A^maj7 Dmaj7 Gmaj7 Cmaj7 Fmaj7

Bbmaj7

MAJOR SCALE

MAJOR PENTATONIC SCALE

MINOR PENTATONIC SCALE

NON HARMONIC TONES

Bbmaj7

PASSING TONES

AUXILIARY TONES

APPROACH TONES

SURROUND TONES

PT PT

UPPER LOWER

AUX AUX

FROM ABOVE

FROM BELOW

ROOT 3 5

5

3

ROOT

SURROUND TONES

APPROACH TONE

SURROUND TONES

PENTATONIC PATTERNS *(PLEASE REFER TO THE PENTATONIC CHART PDF FOR YOUR INSTRUMENT AT MYMUSICPB.COM/JAZZPLATE)

PATTERN 1 (SCALE)

C

G PENT OPT 1

G PENT OPT 2

PATTERN 2 (SCALE IN 3RDS)

C

G PENT OPT 1

G PENT OPT 2

PATTERN 3

Musical notation for Pattern 3, consisting of four lines of bass clef music. The first line has fingerings 1, 2, 3, 5. The second line has fingerings 6, 1, 2, 3 and is labeled "DESCENDING". A note in the second line is marked with "(1 ASCENDED ONE EXTRA BAR IN RECORDING)". The third line has fingerings 1, 6, 5, 3. The fourth line has fingerings 2, 1, 6 and ends with a double bar line.

PATTERN 3 (CHROMATIC SUBSTITUTION)

Musical notation for Pattern 3 (Chromatic Substitution) in bass clef. Chord symbols C, C#, D, and Eb are placed above the staff. Fingerings 1, 2, 3, and 5 are indicated below the notes.

PATTERN 3 (CHROMATIC SUBSTITUTION OF BAR 1)

Musical notation for Pattern 3 (Chromatic Substitution of Bar 1) in bass clef. Chord symbols C, C#, D, and Eb are placed above the staff. Fingerings 1 are indicated below the notes.

PATTERN 3 (TRITONE SUBSTITUTION)

Musical notation for Pattern 3 (Tritone Substitution) in bass clef. Chord symbols C and F# are placed above the staff. Fingering 1 is indicated below the notes.

PATTERN 3 (SHIFTING FROM SHARED TONES)

Musical notation for Pattern 3 (Shifting from Shared Tones) in bass clef. Chord symbols C, Bb, Ab, Gb, Eb, and C are placed above the staff. Fingerings 1, 2/3, 5/6, 1/2, 3/5, and 6/1 are indicated below the notes.

4 IMPROVISATION 1 (17:05)

PLAY 4x

DEMO (16:15)

Cm⁷



F⁷



Bbmaj⁷



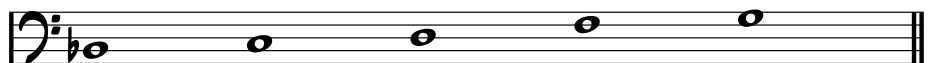
IMPROVISATION 2 (21:10)

RHYTHM CHANGES

PLAY 2x

DEMO (19:50)

Bb (MAJOR PENTATONIC)



Bbmaj⁷

G⁷

Cm⁷

F⁷

Dm⁷

G⁷

Cm⁷

F⁷



Fm⁷

Bb⁷

Eb⁷

Ab⁷

1. Dm⁷ G⁷ Cm⁷ F⁷

2. Cm⁷ F⁷ Bb⁶



D⁷

G⁷



C⁷

F⁷



Bbmaj⁷

G⁷

Cm⁷

F⁷

Dm⁷

G⁷

Cm⁷

F⁷



Fm⁷

Bb⁷

Eb⁷

Ab⁷

Cm⁷

F⁷

Bb⁶

