

JAZZ PLATE: LESSON SIX

(Bb)

MAJOR 7TH CHORDS
 WARM-UP: SYMMETRICAL SCALES
 APPROACH AND SURROUND NOTES
 BUILDING PENTATONIC PATTERNS
 IMPROVISATION: RHYTHM CHANGES

C C^b Cm⁷ C⁷ Cmaj⁷ MAJOR 3RD MAJOR 7TH

WARM-UP (1:45)

G MAJOR SCALE
 C MAJOR SCALE

Ex 1 (3:00)

(LISTEN) (YOU REPEAT PREVIOUS BAR)

Cmaj⁷ D^bmaj⁷ Dmaj⁷
 E^bmaj⁷ E^bmaj⁷ E^bmaj⁷
 Fmaj⁷ Fmaj⁷ Fmaj⁷
 G^bmaj⁷ G^bmaj⁷ G^bmaj⁷
 A^bmaj⁷ A^bmaj⁷ A^bmaj⁷
 B^bmaj⁷ B^bmaj⁷ B^bmaj⁷
 Cmaj⁷ Cmaj⁷ Cmaj⁷

Ex 2 (5:05)

Cmaj⁷ D^bmaj⁷ Dmaj⁷ E^bmaj⁷ E^bmaj⁷ Fmaj⁷
 G^bmaj⁷ G^bmaj⁷ A^bmaj⁷ A^bmaj⁷ B^bmaj⁷ B^bmaj⁷
 Cmaj⁷ Cmaj⁷ Cmaj⁷ Cmaj⁷ Cmaj⁷ Cmaj⁷

Ex 3 (6:10)

Cmaj⁷ Fmaj⁷ B^bmaj⁷ E^bmaj⁷ A^bmaj⁷ D^bmaj⁷
 G^bmaj⁷ B^bmaj⁷ E^bmaj⁷ A^bmaj⁷ D^bmaj⁷ G^bmaj⁷
 Cmaj⁷ Cmaj⁷ Cmaj⁷ Cmaj⁷ Cmaj⁷ Cmaj⁷

*C*maj7

MAJOR SCALE

MAJOR PENTATONIC SCALE

MINOR PENTATONIC SCALE

NON HARMONIC TONES

*C*maj7

PASSING TONES

AUXILIARY TONES

APPROACH TONES

SURROUND TONES

PT PT

UPPER LOWER

AUX AUX

FROM ABOVE

FROM BELOW

ROOT 3 5

SURROUND TONES

APPROACH TONE

SURROUND TONES

*PENTATONIC PATTERNS (PLEASE REFER TO THE PENTATONIC CHART PDF FOR YOUR INSTRUMENT AT MYMUSICP8.COM/JAZZPLATE)

PATTERN 1 (SCALE)

C

G PENT OPT 1

G PENT OPT 2

PATTERN 2 (SCALE IN 3RDS)

C

G PENT OPT 1

G PENT OPT 2

PATTERN 3

Musical notation for Pattern 3, consisting of four staves of eighth-note runs. The first staff shows an ascending run with fingering 1, 2, 3, 5. The second staff continues the ascending run with fingering 6, 1, 2, 3. The third staff shows a descending run with fingering 5, 1, 6, 5. The fourth staff continues the descending run with fingering 3, 2, 1, 6, ending on a whole note.

DESCENDING

PATTERN 3 (CHROMATIC SUBSTITUTION)

Musical notation for Pattern 3 (Chromatic Substitution), showing four staves. The first staff is C with fingering 1. The second staff is C# with fingering 2. The third staff is D with fingering 3. The fourth staff is Eb with fingering 5.

PATTERN 3 (CHROMATIC SUBSTITUTION OF BAR 1)

Musical notation for Pattern 3 (Chromatic Substitution of Bar 1), showing four staves. The first staff is C with fingering 1. The second staff is C# with fingering 1. The third staff is D with fingering 1. The fourth staff is Eb with fingering 1.

PATTERN 3 (TRITONE SUBSTITUTION)

Musical notation for Pattern 3 (Tritone Substitution), showing two staves. The first staff is C with fingering 1. The second staff is F#.

PATTERN 3 (SHIFTING FROM SHARED TONES)

Musical notation for Pattern 3 (Shifting from Shared Tones), showing two staves. The first staff has chords C (fingering 1), Bb (fingering 2/3), and Ab (fingering 5/6). The second staff has chords Gb (fingering 1/2), Eb (fingering 3/5), and C (fingering 6/1).

4 IMPROVISATION 1 (17:05)

PLAY 4x

DEMO (16:15)

Dm⁷



G⁷



Cmaj⁷



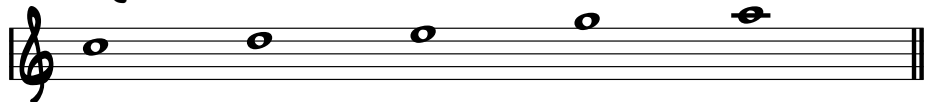
IMPROVISATION 2 (21:10)

RHYTHM CHANGES

PLAY 2x

DEMO (19:50)

C (MAJOR PENTATONIC)



Cmaj⁷

A⁷

Dm⁷

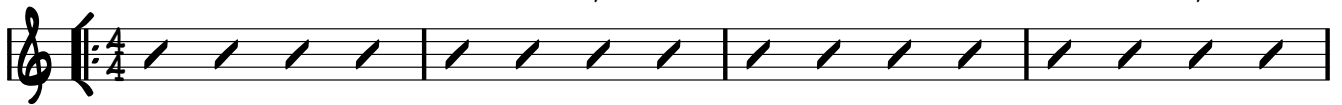
G⁷

Em⁷

A⁷

Dm⁷

G⁷



Gm⁷

C⁷

F⁷

Bb⁷

1.

Em⁷

A⁷

Dm⁷

G⁷

2.

Dm⁷

G⁷

C⁶



BRIDGE

E⁷



A⁷

D⁷



G⁷

Cmaj⁷

A⁷

Dm⁷

G⁷

Em⁷

A⁷

Dm⁷

G⁷



Gm⁷

C⁷

F⁷

Bb⁷

Dm⁷

G⁷

C⁶

