

JAZZ PLATE: LESSON SEVEN

(C) Bass Clef

MODALITY
KEY SIGNATURES
TETRA CHORDS
MODES
IMPROVISATION: MODALITY

Cmaj7 MAJOR (IONIAN MODE)

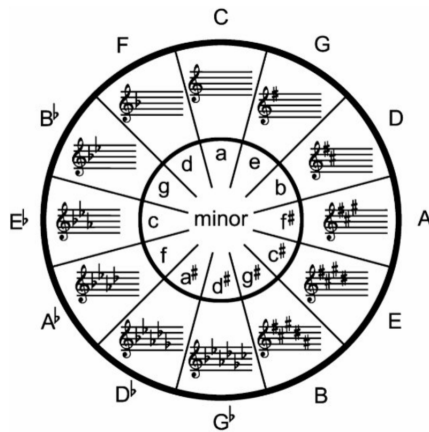
1 3 5 7

EXERCISE 1: MAJOR/IONIAN (2 MAJOR TETRA CHORDS) (2:00)

F MAJOR SCALE

B FLAT MAJOR SCALE

KEY SIGNATURE CLOCK



SCALE RANGE (SHOWN AS TWO OCTAVES ALTHOUGH YOU CAN WRITE OUT YOUR FULL INSTRUMENT RANGE)
FIND YOUR STARTING NOTE AND IDENTIFY THE KEY SIGNATURE.
ASCEND TO THE TOP, THEN DESCEND TO THE BOTTOM AND RETURN BACK UP TO YOUR STARTING NOTE.

Cmaj7

Gmaj7

Fmaj7

2 MODES
 PITCH AXIS (PA)
 MAJOR/MINOR BASED
 CHARACTERISTIC NOTES (DIFFERS FROM MAJOR/MINOR SCALES)

C IONIAN (MAJOR BASED)

D DORIAN (MINOR BASED) RAISED 6TH
 E PHRYGIAN (MINOR BASED) LOWERED 2ND
 F LYDIAN (MAJOR BASED) RAISED 4TH
 G MIXOLYDIAN (MAJOR BASED) LOWERED 7TH
 A AEOLIAN (MINOR BASED)
 B LOCRIAN (MINOR BASED) LOWERED 2ND AND 5TH

DORIAN MODE (MINOR BASED)

Dm7 PITCH AXIS ST

EXERCISE 2: DORIAN MODE (2 MINOR TETRA CHORDS) 3 5 CHAR. NOTE (RAISED 6TH) 7

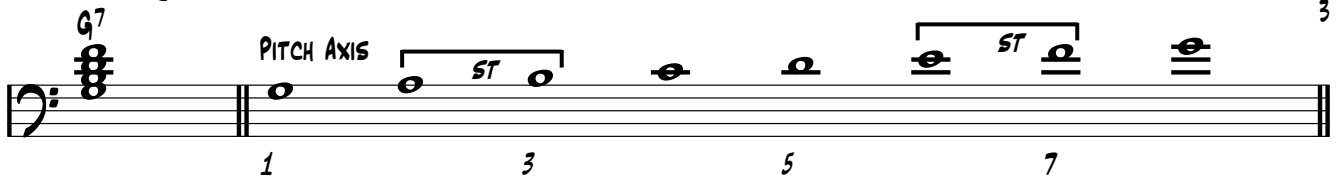
MINOR TETRA DORIAN SCALE MINOR TETRA

Cm7

Gm7

Fm7

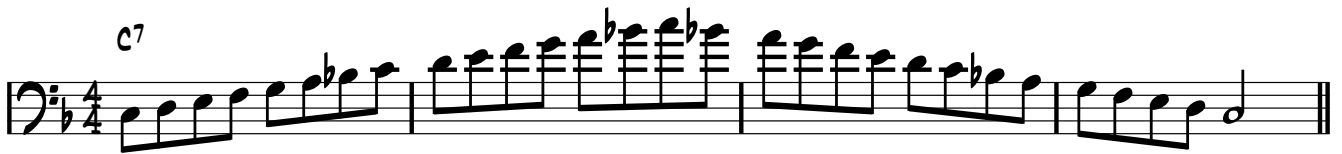
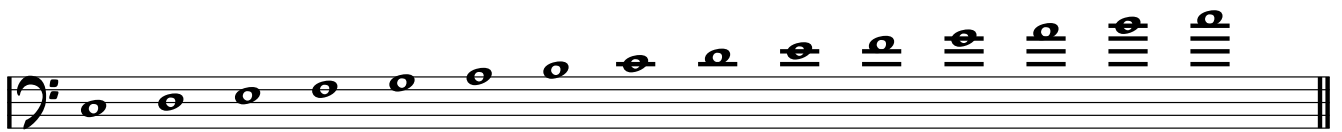
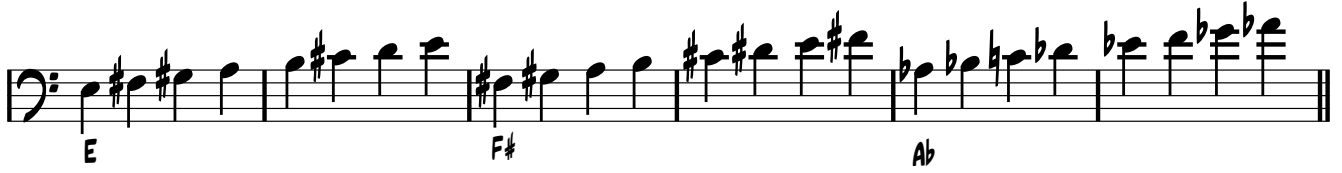
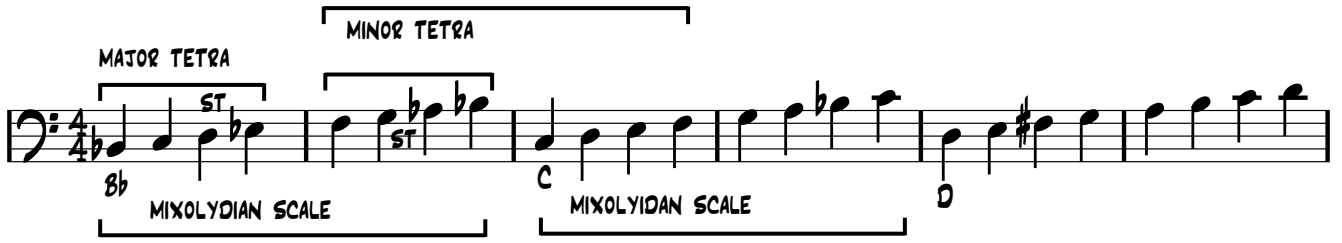
MIXOLYDIAN MODE (MAJOR BASED)



EXERCISE 3: MIXOLYDIAN (MAJOR AND MINOR TETRA CHORDS)
(14:40)

CHAR. NOTE
(LOWERED 7TH)

(F MELODIC MINOR)



CREATING MODALITY MELODIES

REPETITION OF PITCH ACCESS (P.A.)

APPROACH AND SURROUND NOTES TARGETTING PITCH ACCESS

CHARACTERISTIC NOTE

EXAMPLE 1

EXAMPLE 2: SEQUENCES

IMPROVISATION: MODALITY

DEMO: (20:15)

YOU PLAY 4x: (21:50)

DORIAN

MIXOLYDIAN

DORIAN

DORIAN